



EXEN CORPORATION
(formerly known as HAYASHI VIBRATOR Co.,Ltd.)
1-17-13, Hamamatsu-cho, Minato-ku, Tokyo, Japan, 105-0013
TEL.81-3-3434-8452 FAX.81-3-3434-8368
<http://www.exen.co.jp/>
Email:commerce@exen.co.jp



IN CHINA
EXEN VIBRATOR (JIAXING) CO., LTD
No.22 Zhenbei road, Yuxin town, Nanhu district, Jiaxing city, Zhejiang, CHINA, 314009
Tel 86-573-8316-2051 Fax 86-573-8316-2025
<http://www.exen.cn/>
info@exen.cn
QQ: 1627861599

DISTRIBUTOR:



Superior
Performance
& Dynamic
Power

EXEN CORPORATION
TOKYO, JAPAN



<http://www.exen.co.jp/>

Provides labor saving and safety in concrete placing work.

Improvement in work efficiency increases the quality of work by a few workers.



Conventional concrete placing operation

In addition to the operator of the vibrator, assistant personnel for switch operation and cable management were required.



Improved safety by no using gasoline engine.
You will choose to carry this type of vibrator.

Features

Shoulder style

Integrated battery and inverter. Pad with high cushioning to reduce the load on workers.



Hand switch

Available to check the remaining battery level and to turn on/off the power supply.

Vibrator

25 to 30% lighter than the conventional type. Workability improved and centrifugal force increased by 10%.

Battery

Large capacity power supply of 36V,21Ah. The operation time of the vibrator is 3hours(ECV40A). Built-in protection circuit to prevent overload, overdischarge and overcharge.

Inverter

Small and lightweight, combined weight of the inverter and the battery is 8.5kg. High airtightness, overcurrent protection function and overheat protection function are installed.

Operation switch

Turn on/off the vibrator at hand is available.



Specifications

| Model | Hose (dia. x length) | Output (W) | Voltage (V) | Current (A) | Frequency (Hz) | Head size (dia. x length) | Hose size (dia. x length) | Weight (kg) |
|--------|----------------------|------------|-------------|-------------|----------------|---------------------------|---------------------------|-------------|
| ECV40A | 1.5 | 250 | 25 | 8.0 | 200 | φ43x273 | φ33x1,500 | 4.3 |
| ECV50A | 1.5 3.0 | 400 | | 12.0 | | φ52x287 | | 5.5 6.6 |

| Model | Input | | | Output | | | | External dimensions (mm) | Weight (kg) |
|--------|--------------|-------------|-------------|--------------|-------------|-------------|----------------|--------------------------|-------------|
| | Capacity (W) | Voltage (V) | Current (A) | Capacity (W) | Voltage (V) | Current (A) | Frequency (Hz) | | |
| ECV-15 | 500 | 36 | 14 | 450 | 25 | 12 | 400 | 164 x 90 x 55 | 1.1 |

| Model | Capacity (Ah) | Voltage (V) | Operable time (w/ECV40A/ECV50A) | Charging time | External dimensions (mm) | Weight (kg) |
|---------|---------------|-------------|---------------------------------|---------------|--------------------------|-------------|
| BL36200 | 21 | 36 | 3Hour/2Hour | 3Hour | 500 x 250 x 115 | 7.4 |

*Operable time is a calculated value based on battery capacity and current consumption. This will vary depending on the working environment.

Concrete placing work using cordless high-frequency vibrator

The integrated battery and inverter can be carried on the back without disturbing the movement of both hands of the worker.



In addition!

- Mobility increases by eliminating the need to handle long cables.
- Improvement of workability improves work quality.
- These improvements reduce the time it takes to prepare and cleanup work.

«Features

World standard with High durability

The self-centering bearing provides high durability and stabilized vibration.

Reliability “Japan quality”

The heat treatment applied to the vibrator head increases its hardness and provides long life.

Excellent Usability

Two-layer mesh constituting the hose reduces breakdown during concrete placement.



«Specifications

| Model | Hose length (m) | Frequency (Hz) | Overall length (mm) | Head (Dia.xL) (mm) | Weight (kg) |
|--------|-----------------|----------------|---------------------|--------------------|-------------|
| HV28ZB | 6 | 158-200 | 6,559 | 28x420 | 14.1 |
| HV32ZB | | | 6,562 | 32x423 | |
| HV38ZB | | | 6,585 | 38x440 | |
| HV45ZB | | | 6,596 | 45x451 | |
| HV60ZB | | | 6,593 | 60x448 | |
| | | 150-200 | 6,593 | 60x448 | 19.1 |

«Features

Equipped with CC Robin and Honda engines

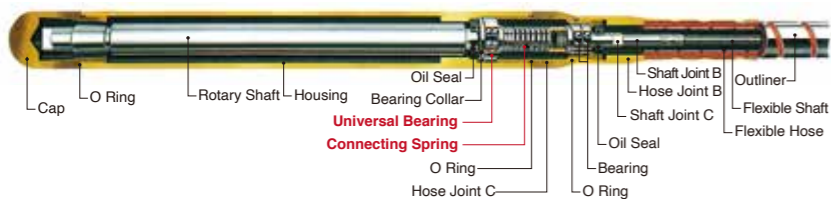
«Specifications

| Model | Engine type | Output/revolution (kW/min-1) | Weight (kg) |
|---------|-------------|------------------------------|-------------|
| HVE-RFA | Robin CC | 2.5 / 3,400 | 25 |
| HVE-FSB | EY20-3D | | 22 |
| HVE-RH | Honda GX160 | 2.8 / 3,400 | 25 |
| HVE-HS | | | 22 |



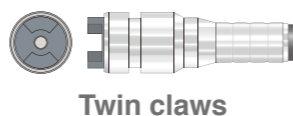
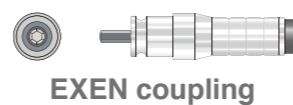
Beware of imitation !

EXEN HV Series Vibrator Cutaway View



1. Connecting spring

It reduces the transmission of the vibration which occurred from Rotary shaft, reduces the chance of being cut Flexible shaft.



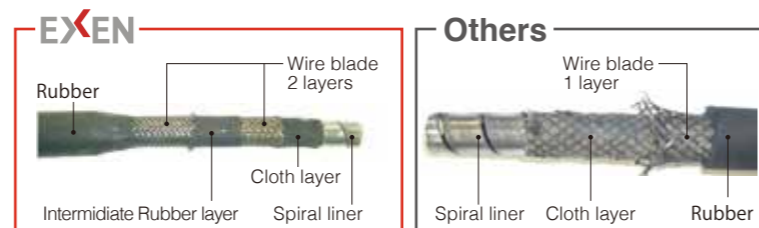
2. Universal Bearing

Universal bearing moves adjusting to the movement of the rotary shaft.

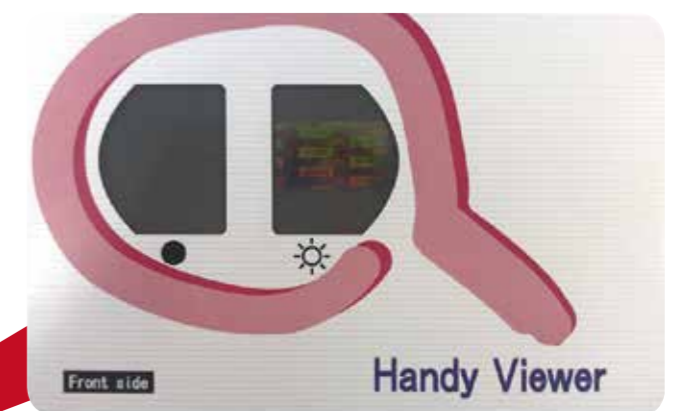


3. Special structure hose

Double-layered wire blade realizes long life of the hose.



Make sure that the view through the “VIEWER” has changed like below.



HOLOGRAM



Not visible



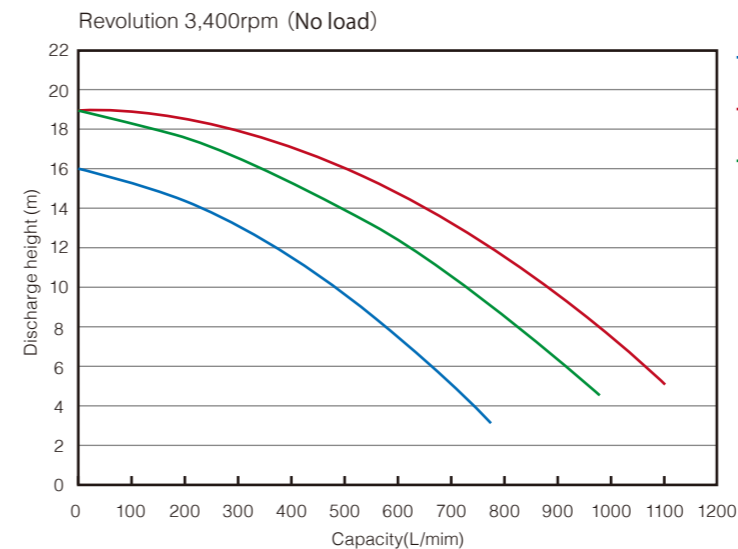
Visible

Make sure that “TRUSTGRAM” is put on the product.



More than 1000L/ min drain capacity.
No priming water required.
High durability.

Specifications and comparison



Comparison with the conventional product

Maximum discharge height: **increases 20%**
Maximum capacity: **increases 40%**

Comparison with other manufacturers (in Japan)

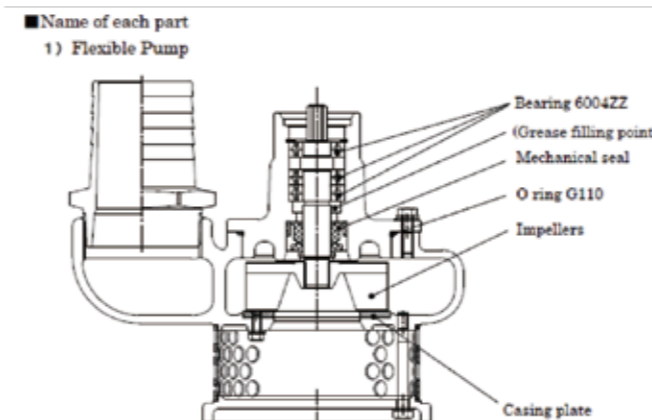
Maximum discharge height: **3% higher**
Maximum capacity: **10% higher**

High durability

• Body : increases casing thickness.

• Impeller : Changed to 5 blades.

Increases discharge capacity by adjusting blade angle. Improves 12% durability by changing materials and quenching.



EFP80 Pump set

Features

High durability

Equipped with specially designed "Mechanical oil seal" for maximum durability. Durable cast iron impeller and aluminum alloy casting design body provides long life use. Hose protection outliners in three places.



EFP80 Pump

Specifications

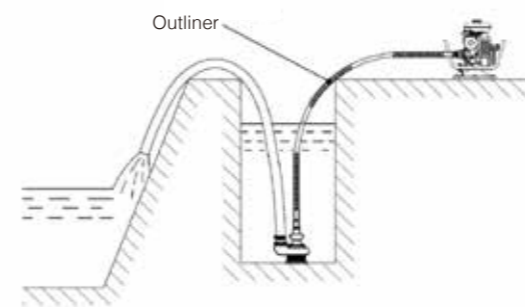
| Hose length (m) | Discharge diameter (mm) | Max. lift (m) | Max capacity (L/min) | Revolution (rpm) | Weight (kg) | | |
|-----------------|-------------------------|---------------|----------------------|------------------|-------------|------------|-------|
| | | | | | Pump | Hose/shaft | Total |
| 6 | 76(3in) | 19.1 | 1,103 | 3,400 | 6.9 | 19.3 | 26.2 |

• Adopted three Outliner prevent to bend and wear the shaft.

• Use of SUS304 for Strainer improves durability.

• Adopted Japan made Bearings.

• Expands opening area by changing the hole diameter = Increases suction efficiency.



Strainer / HFP80N

Strainer / EFP80



HBM50VF



HBM50VF+INVERTER set

Features

Improved working conditions

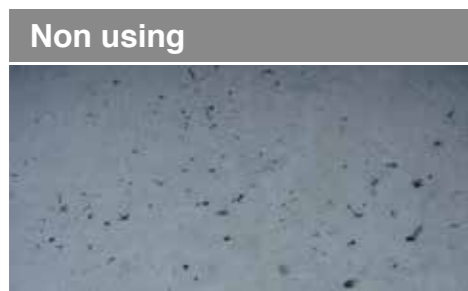
Reduction of vibration transmission to the hands and weight reduction increase working condition.

Improved quality of concrete products

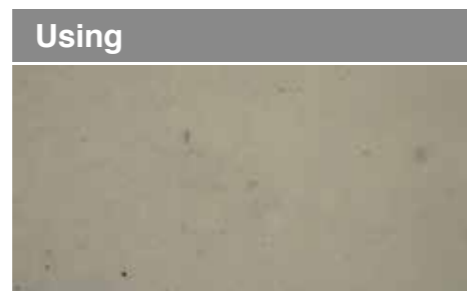
High frequency vibration can create a robust, solid and smooth surface.

Various types of vibrators are available

According to various applications, a suitable model can be chosen.



Non using



Using



Specifications

| Model | Output (W) | Voltage (V) | Current (A) | Frequency (Hz) | Head (mm) | Hose (mm) | Weight (kg) |
|---------|------------|-------------|-------------|----------------|-----------|-----------|-------------|
| HBM30ZX | 130 | 48 | 3.5 | 200/240 | 31×376 | 28×6,000 | 9.6 |
| HBM40VF | 250 | | 5.5 | | 43×348 | 33×6,000 | 12.1 |
| HBM50VF | 400 | | 9.0 | | 52×397 | 36×6,000 | 16.1 |
| HBM60ZX | 500 | | 13.0 | | 61×415 | | 17.5 |

*Weight includes cabtyre cable

*3 types of head shapes are available. (Detail see next page)

Multifunction vibrators

3 types of heads available



Fin type
EXEN original



Round head
Standard



Rubber head
eliminate form work damage

Vibrator for slab pouring

CSV ideal configuration (the short and light head) for slab pouring.



CSV

Vibrator with extension pipe

ZXLH (its 1m long extension pipe) is suitable for tall concrete structure.



ZXLH

Specifications

| Model | Output (W) | Voltage (V) | Current (A) | Frequency (Hz) | Head (mm) | Hose (mm) | Weight (kg) |
|-----------|------------|-------------|-------------|----------------|-----------|-----------|-------------|
| CSV50 | 250 | 48 | 5.5 | 200/240 | 52×244 | 33×1,500 | 8.5 |
| HBM30ZXLH | 130 | | 3.5 | | 31×376 | 28×4,000 | 12.1 |
| HBM40VFLH | 250 | | 5.5 | | 43×360 | | 13.9 |

*Weight includes cabtyre cable.



Electric type

Features

Usability

Quick mount design allows one bolt mounting/dismounting.

Resist to steam curing (totally sealed design)

Unnecessary to dismount during steam curing.

Resist long time operation

Special motor design allows long time operation.



HKM75LFA

Hook base

Specifications

| Model | Output (W) | Voltage (V) | Current (A) | Frequency (Hz) | Vibration frequency (Hz) | Centrifugal force (kN) | Weight (kg) |
|----------|------------|-------------|-------------|----------------|--------------------------|------------------------|-------------|
| HKM55LFA | 550 | 48 | 12.5 | 100-240 | 50-120 | 8.80 | 16.5 |
| HKM75LFA | 750 | | 17.0 | | | | 21.3 |

*Weight includes cable.

Pneumatic type

Features

- Quick mount design using hook base bracket and simple hinge bolt.
- High frequency vibration for excellent surface finishing.
- Totally sealed design for steam curing environment.



CRJ606F



CR100LF

Specifications

| Model | Frequency (Hz) | Centrifugal force (kN) | Air Consumption (Nm ³ /min) | Air Pressure (Mpa) | Base Type | Weight (kg) |
|----------|----------------|------------------------|--|--------------------|-----------|-------------|
| CRJ606LF | 200 | 4.1 | 800 | 0.2-0.6 | CRJ606LF | 5.5 |
| CRJ610LF | | 6.8 | | | CRJ610LF | 7.5 |
| CR80LF | 217 | 25 | 1680 | | CR100 | 15.9 |
| CR90LF | | 33 | | | | 16.5 |
| CR100LF | | 47 | | | | 18 |

The application of CR vibrator to precast concrete products





Features

Water proof

Aluminum die cast design provides IP55 water proof structure.

Durability

Solid frame and rubber vibration insulator improve the durability.

Reliability

HC series can provide stable output voltage which can provides maximum vibrator performance.



HC111B



HC113B/116B



HC230A

Specifications

| Model | | Capacity (kW) | Voltage (V) | Current (A) | Frequency (Hz) | Outlet | Weight (kg) |
|--------|--------|---------------|-------------|-------------|----------------|--------|-------------|
| HC111B | Input | 1.3 | 100 | 13 | 50/60 | 1 | 9.8 |
| | Output | 1.03 | 48 | 12.4 | 240 | | |
| HC113B | Input | 1.5 | 100 | 15 | 50/60 | 2 | 10.0 |
| | Output | 1.3 | 48 | 15 | 240 | | |
| HC116B | Input | 2.0 | 100 | 20 | 50/60 | | |
| | Output | 1.6 | 48 | 19 | 240 | | |
| HC230A | Input | 3.8 | 200 | 11 | 50/60 | 3 | 15.5 |
| | Output | 3.0 | 48 | 36 | 100-240 | | |



Features

Frequency adjustable

Adjustable frequency function of H series make precast concrete robust, solid, smooth surface.

Specially designed brush

Specially designed brush for EFC prevents premature damage of the machine.

Cooling device

HAG series combine special fan cooling system to make the machine last longer.



H460(J)



EFC4B



HAG122MH



HAG134MHA

Specifications

| Model | | Capacity (kW) | Voltage (V) | Current (A) | Frequency (Hz) | Weight (kg) | Remark |
|------------|-----------|--------------------|-------------|--------------------|----------------|-------------|-------------|
| H460(J) | Input | 7.9 | 380 | 12 | 50 | 50 | Output 48V |
| | Output | 6.0 | 48 | 72 | 100-240 | | |
| EFC4B | Motor | 4.2 | 380 | 7.4 | 50 | 70 | Output 48V |
| | Generator | 4.0 | 48 | 48 | 200 | | |
| H460NT(J) | Input | 12 | 380 | 18.2 | 50 | 32 | Output 380V |
| | Output | 9.1 | 380 | 15 | 100-240 | | |
| H4150NT(J) | Input | 28 | 380 | 42.5 | 50 | 38 | Output 48V |
| | Output | 23 | 380 | 34.9 | 100-240 | | |
| HAG122MH | Output | 2.2 | 48 | 26.5 | 240 | 36 | Output 48V |
| | Engine | Honda GX160T2 VXJE | | Output(kW) 3.6/2.9 | Outlet 2nos. | | |
| HAG134MHA | Output | 3.4 | 48 | 40.9 | 240 | 40 | Output 48V |
| | Engine | Honda GX200T2 VXJE | | Output(kW) 4.1/3.7 | Outlet 3nos. | | |



Features

Durability

Durable aluminum die cast motor case allows using for last long.

Safety

Dual insulation structure allows safety use.

Comfortable

Double anti-vibration handles design for comfortable operation.

E28FP 1.0m



E28FP 1.5m



Specifications

| Model | Hose length (m) | Output (W) | Voltage (V) | Current (A) | Frequency (Hz) | Total length (mm) | Head (mm) | Vibrator assembly (mm) | Weight (kg) |
|-------|-----------------|------------|-------------|-------------|----------------|-------------------|-----------|------------------------|-------------|
| E23F | 0.4 | 280 | 100 | 5.0 | 220-280 | 1,074 | 23x336 | 820 | 5.0 |
| | 0.8 | | | | | 1,489 | | 1,235 | 5.5 |
| | 1.3 | | | | | 1,989 | | 1,735 | 6.3 |
| | 1.8 | | | | | 2,489 | | 2,235 | 7.1 |
| E28FP | 0.6 | 110 | 4.5 | 220-280 | 1,078 | 28x186 | 824 | 5.0 | |
| | 1.0 | 115 | 4.3 | | 1,482 | | 1,228 | 5.6 | |
| | 1.5 | | 1,982 | | 1,728 | | 6.4 | | |
| | 2.0 | | 2,482 | | 2,228 | | 7.2 | | |
| E32FP | 0.6 | | 200 | 2.5 | 210-270 | 1,079 | 32x187 | 825 | 5.2 |
| | 1.0 | 220 | 2.3 | 1,483 | | 1,229 | | 5.9 | |
| | 1.5 | | 1,983 | 1,729 | | 6.7 | | | |
| | 2.0 | | 2,483 | 2,229 | | 7.4 | | | |
| E38FP | 0.6 | | 230 | 2.2 | 210-270 | 1,079 | 38x187 | 825 | 5.6 |
| | 1.0 | 240 | 2.1 | 1,483 | | 1,229 | | 6.2 | |
| | 1.5 | | 1,983 | 1,729 | | 7.0 | | | |
| | 2.0 | | 2,483 | 2,229 | | 7.8 | | | |



Features

Surface finish (E32DH, E32DP, E32DPS, EKCA)

Extremely unique configuration vibrators provide smooth surface finish of concrete.

Easy operation

Simply insert along the wall of the concrete mold. (E32DH, E32DP, E32DPS)
Simply push against the outside of the mold (EKCA)

Usability

Easy to use
Hard shaft type vibrators (E-DS, E-D, E-DL) are easy to insert to the target point.



EKCA

Specifications

| Model | Output (W) | Voltage (V) | Current (A) | Frequency (Hz) | Total length (mm) | Head (mm) | Vibrator assembly (mm) | Weight (kg) |
|--------|------------|-------------|-------------|----------------|-------------------|-----------|------------------------|-------------|
| E25DS | 280 | 100 | 5.0 | 235-285 | 756 | 25x447 | 447 | 4.9 |
| E23D | | | | | 865 | 23x556 | 556 | 4.9 |
| E28D | | | | | 784 | 28x475 | 475 | 5.0 |
| E32D | 280 | 115 | 4.3 | 200-250 | 807 | 32x498 | 498 | 5.6 |
| E23DL | | | | | 1,009 | 23x700 | 700 | 5.2 |
| E28DL | 280 | 200 | 2.5 | 220-270 | 1,015 | 28x706 | 706 | 5.8 |
| E32DL | | | | | 1,036 | 28x727 | 727 | 6.3 |
| E32DH | 280 | 220 | 2.3 | 225-275 | 1,070 | 50x550 | 761 | 5.6 |
| E32DP | | | | | 1,138 | 300x400 | 829 | 7.5 |
| E32DPS | 280 | 230 | 2.2 | 205-280 | 1,739 | 120x1219 | 1,430 | 7.8 |
| EKCA | | | | | 404 | 76x113 | 95 | 4.7 |



KC holder

11 Handy vibrator (Cordless type)



Features

No need cord and power supply
Easy operation at the construction site.

Lithium battery adoption
Powerful and long life. 20-30 minutes continuous use.

Comfortable operation
Compact, lightweight and ergonomic design absorb vibration for comfortable operation.



Specifications

| Model | Battery | Run time (approx.min) | Frequency (Hz) | Total length (mm) | Head (mm) | Weight (kg) |
|-----------|-------------|-----------------------|----------------|-------------------|-----------|-------------|
| C25DS | DC18V 4.0Ah | 30 | 200 | 767 | 25x447 | 4.1 |
| C28D | | 25 | | 795 | 25x475 | 4.2 |
| C28DL | | 25 | | 955 | 28x635 | 5.0 |
| C28F 0.6m | | 20 | | 1,089 | 28x186 | 4.2 |
| CKCA | | 20 | | 125 | 415 | 76x113 |

12 Dam construction vibrator "VIBACK"

Features

For compacting mass concrete
Front assembly is developed for compacting mass concrete for hydropower dam.
Our Front assembly called "Viback VB-AK series" have many delivery records in the world.

Reduce labor cost
Vibrator front assembly dedicates reducing labor cost.
It has 4-8 numbers of vibrators HIB150HDL, and is used by mounted on the excavator.
The HIB150HDL vibrators generates powerful vibration which places concrete of 25 cbm/h. (per one vibrator)
It reduces 35% labor cost compared with handheld vibrators.

High durability and easy maintenance
Heat-treated ductile cast iron tip provides excellent wear resistance.
Also, at the time of repair it is also possible to replace only the tip.

Specifications

Front assembly VB-AK series

| Model | Number of vibrator | Concrete compacting ability (m ³ /h) | Excavator class (t) | Oil flow for vibrator at 18MPa (L/min) | Rounding | Weight (kg) |
|------------|--------------------|---|---------------------|--|---------------|-------------|
| VB-70AK4F | 4 | 100 | 6-8 | 60 | Not available | 620 |
| VB-70AK4R | 780 | | | | | |
| VB-130AK6R | 6 | 150 | 12-13 | 110 | Available | 1200 |
| VB-130AK8R | 8 | 200 | | | | 1400 |



HIB-100



HIB-BSA



HD-2100A

Specifications

| Model | Frequency (Hz) | Centrifugal force (kN) | Normal pressure (MPa) | Oil flow rate (L/min) | Head dia.xLength (mm) | Effective range (m) | Weight (kg) |
|-----------|----------------|------------------------|-----------------------|-----------------------|-----------------------|---------------------|-------------|
| HIB150HDL | 117-133 | 13.6-17.8 | 20.6 | 14-16 | 150x850 | 1 | 68 |

| Model | Output (W) | Voltage (V) | Current (A) | Frequency (Hz) | Centrifugal force (kN) | Length (mm) | Head dia.xlength (mm) | Effective range (mm) | Weight (kg) |
|---------|------------|-------------|-------------|----------------|------------------------|-------------|-----------------------|----------------------|-------------|
| HIB100A | 1,500 | 200 | 7.5 | 120/125 | 8.83-9.56 | 924 | 101x664 | 0.8 | 41 |

| Model | Capacity (KVA) | Voltage (V) | Current (A) | Frequency (Hz) | Weight (kg) | Number of vibrators (HIB100A) |
|---------|----------------|-------------|-------------|----------------|-------------|-------------------------------|
| HD2100A | Input 13 | 200 | 38 | 50/60 | 173 | 4 |
| | Output 10 | | 29 | 125 | | |

| Model | Voltage (V) | Permissible current of breaker (A) | Weight (kg) | Number of vibrators (HIB100A) |
|---------|-------------|------------------------------------|-------------|-------------------------------|
| HIB-BSA | 200 | 12 | 21 | 4 |



VB-70AK4F





ES-2RA



«Features

Just push it

Just push the handle to sweep. No engine.

Wide product range to fit various conditions

Five kinds of sweepers provide good sweeping performance in various conditions.

Battery operated brush (ES-B770 only)

Due to adopting battery-powered brush, ES-B770 is much easier to push. Battery: 3 hours operating time. 12V 12Ah.

«Specifications

| Model | ES-2RA | ES-390J | ES-550A | ES-770 | ES-B770 |
|-----------------------------|--------|---------|---------|--------|---------|
| Sweeping width (cm) | 71.5 | 39 | 55 | 77 | 77 |
| Sweeping performance (m/h) | 2,500 | 1,360 | 1,920 | 2,690 | 3,230 |
| Dirt container capacity (L) | 20 | 1.6 | 20 | 50 | 50 |
| Weight (kg) | 27 | 7.2 | 7.2 | 13 | 21 |



CASTER



ES-770



Vertical storage space-saving and clean



Sealing lip & filter keep the dust in the machine



Brush down holder & side roller for easy sweeping along curbs and walls



Brush height adjustment ensure optimal cleaning performance on various types of surface



ES-550A



ES-B770



ES-390J



ES-390J BRUSH

ES-390J BOX